

EN



QUANTRON



BEV | FCEV

Q-Light

QUANTRON QLI

Based on the Iveco Daily

Empower the Future



Quantron AG

Koblenzer Straße 2

D-86368 Gersthofen/Augsburg

Phone: +49 (0) 821 - 78 98 40 - 0

Fax: +49 (0) 821 - 78 98 40 - 99

Mail: info@quantron.net

Web: www.quantron.net



Dear customers,

Quantron AG offers you innovative and practical e-mobility solutions for everyday use and thus makes a sustainable contribution to the decarbonization of road transport. In the Q-Retrofit business unit, we supply you with environmentally friendly transportation solutions as a new vehicle or as a conversion of an existing diesel vehicle to electric drive. You have the choice! We help you reduce your dependence on fossil fuels and thus your CO2 footprint. With our Q-Ecosystem, we also offer you an all-round service package – from individual consulting according to your requirements, a vehicle tailored to your personal needs and the installation of the appropriate charging infrastructure to servicing your fleet.

Contact us, we will accompany you on your way to e-mobility.

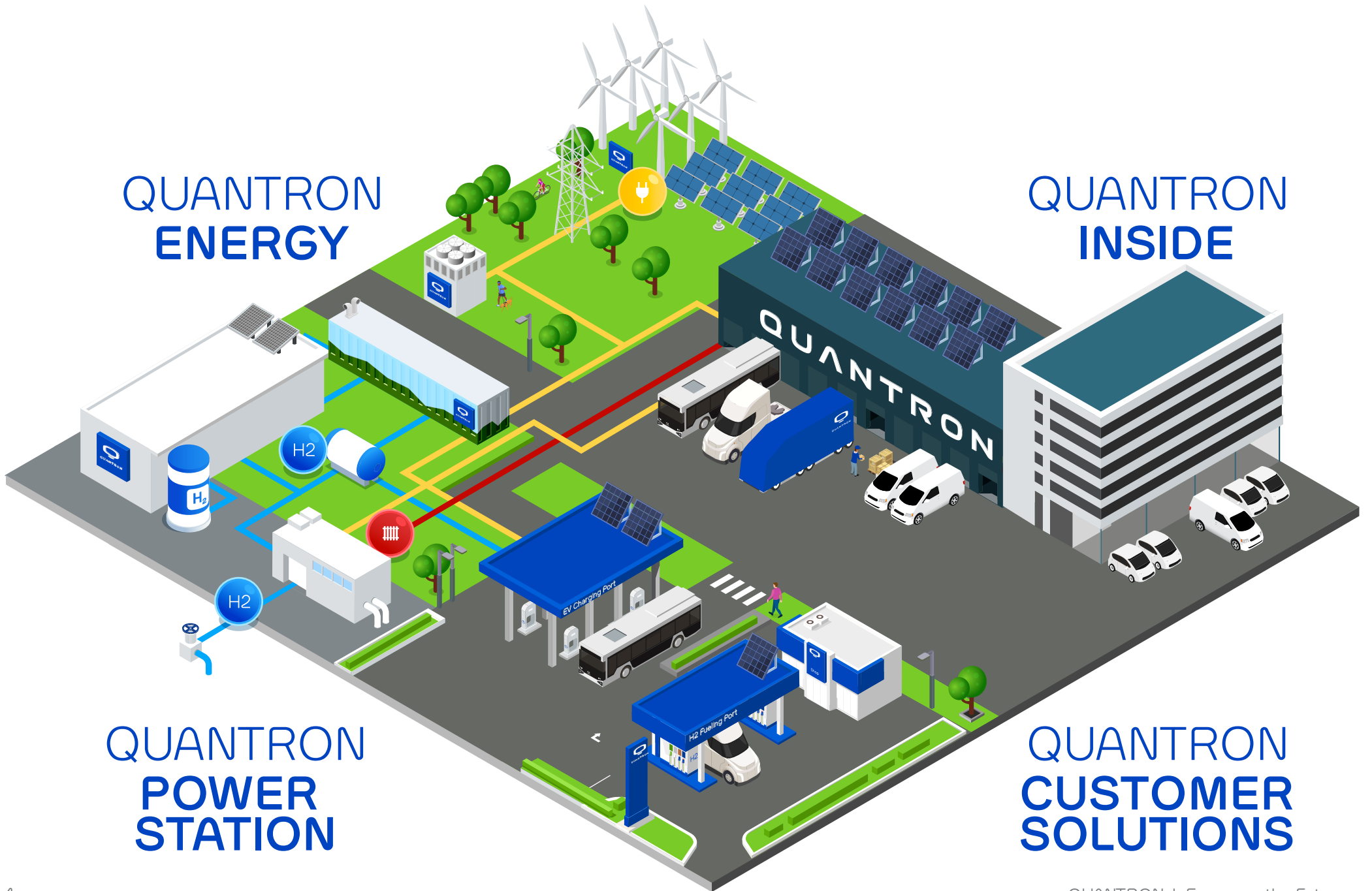
Best regards

A handwritten signature in blue ink, appearing to read 'Andreas Haller'.

Yours, Andreas Haller
Founder and Chairman of the Board of Quantron AG

QUANTRON
ENERGY

QUANTRON
INSIDE



QUANTRON
POWER
STATION

QUANTRON
CUSTOMER
SOLUTIONS

QUANTRON 360° Platform Solution – Quantron-as-a-Service

With QUANTRON-as-a-Service we are aiming for a 360° Zero Emission product & solution ecosystem. This means: QUANTRON is a solution provider offering an “asset-light” solution that encompasses all facets of the mobility value chain, such as the e-vehicle, service & maintenance, insurance, leasing, financing, infrastructure as well as green electricity and hydrogen.

The result: providing comprehensive zero-emission transport solutions on a per-kilometre basis.

This Q-Ecosystem consists of four central areas: QUANTRON ENERGY, QUANTRON INSIDE, QUANTRON CUSTOMER SOLUTIONS and QUANTRON POWER STATION.

QUANTRON ENERGY

As a central player in a rapidly developing ecosystem, QUANTRON coordinates resources and partners to realise the production of green energy / green hydrogen and the associated supply to customers at competitive prices in the future as a platform.

QUANTRON INSIDE


QUANTRON already supplies working, practical e-commercial vehicles with battery and hydrogen-electric drives based on the highly innovative QUANTRON INSIDE technology. The wide range of products includes new vehicles as well as the resource-saving electrification of used and existing vehicles with diesel engines (Q-retrofit).

QUANTRON POWER STATION

In this area, we cover the topics of charging and hydrogen refuelling. Together with our partners, we are able to offer turnkey solutions for the development of the necessary green charging/fuelling infrastructure for BEVs and FCEVs (own and in cooperation), both at customer depots and along motorways.

QUANTRON CUSTOMER SOLUTIONS

We offer comprehensive consulting services for the operation of your climate-neutral fleet. This includes, for example, topics such as the appropriate charging infrastructure, rental, financing and leasing options, as well as an all-encompassing aftersales service network with 700 locations. In addition, there are telematics and in-cloud solutions for remote diagnosis and fleet management.

A futuristic cityscape with a white and blue SUV in the foreground and flying cars in the sky. The SUV is a white and blue crossover vehicle with a prominent blue grille and headlights. The license plate area displays 'QLI FCEV'. The car is parked on a paved plaza. In the background, there are several modern skyscrapers with glass facades. A few flying cars are visible in the sky. The overall scene is bright and clear, suggesting a clean, sustainable future.

Have you heard about
the new normal?

Zero Emission. Full Power. Better Future.



 **QUANTRON**

100% Electric

 **QUANTRON**

QLI BEV



QUANTRON

QUANTRON

QUANTRON AS FOR YOUR SOLUTION QUANTRON.NET

QUANTRON Q-LIGHT

QUANTRON's vision is a greener world. With zero-emission commercial vehicles, we are making our contribution to reducing CO2 emissions and thus to achieving global climate targets. We want to change the future in a sustainable way.

From 3.5 to 7.2 metric tons (7.694 to 16.500 lbs) - our Q-vehicles in the light segment are available with various environmentally friendly drives: battery-electric or with hydrogen drive. Whether passenger transportation or inner-city deliveries, we offer you the right model according to your business requirements.



QUANTRON

QUANTRON

QUANTRON

QUANTRON AS - YOUR LOGISTICS SOLUTION - QUANTRON.NET

QUANTRON QLI - BEV

Battery-electric models from 3.5 to 7.2 metric tons

The QLI BEV models are locally emission-free and quiet on the road, making them ideal for use at the edges of the day and at night – a benefit for residents and employees. Different body variants are available for the 100 % electric transport vehicles. The BEV models can thus be flexibly adapted to customer requirements. Thanks to the fast charging power of 70 kW (QLI x-75) or 105 kW (QLI x-115) the batteries can be charged in approx. 1 h. Ideal for charging during breaks and when loading/unloading the vehicle.

Benefits

- New vehicles as well as retrofitting of existing and used vehicles possible
- Government subsidies of up to 80 % of the additional costs*
- Toll and tax exemption
- Quiet and emission-free operation: benefit for residents and employees in and around the vehicles
- New delivery potentials „on the last mile“
- Ideal for stop-and-go: i. a. recovering of brake energy through recuperation
- Lower maintenance, repair and operating costs compared to diesel vehicles
- Higher efficiency (approx. 90 %) compared to diesel vehicles (approx. 35 %)
- Enhancement of own company image through sustainable transports

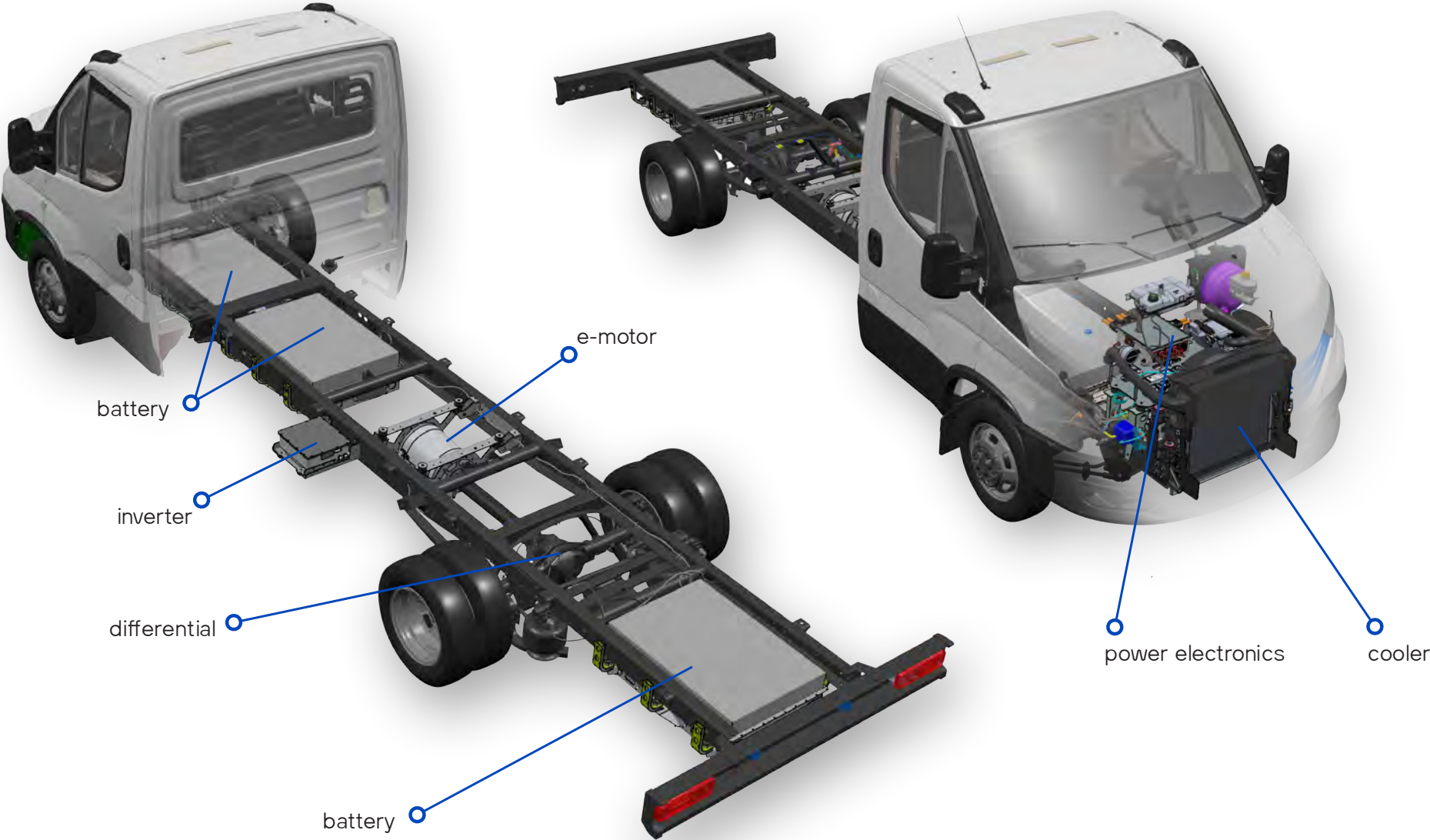
*Government subsidies depending on the place of residence and the requirements of the applicant.



Special benefits of our 3,5 t lightweight variant based on the IVECO Daily 35 S

- A class B driver's license is sufficient to drive
- As a class N1 vehicle, no additional certificates or tachographs are required
- QUANTRON electrification achieves a payload of up to 1,000 kg, depending on the superstructure

QUANTRON QLI - 100% electric (BEV)



Technical information

QLI x-75

QLI x-115

Example configurations:

Performance		
Power	100 kW (136 PS)	147 kW (200 PS)
Torque	1150 Nm	1250 Nm
Drive type	central motor	central motor
Top speed	90 km/h	80 km/h
Range ¹	180 km	180 km

Battery specifications		
Capacity	75 kWh	115 kWh
Voltage	400 V	400 V
Cell type	NMC	NMC
Charge ² / fast charging power	13,2 kW / 70 kW	13,2 kW / 105 kW
Charging time / fast	6 h / ~ 1 h	9 h / ~ 1 h
Battery charging cycles	> 2500	> 2500

Base van		
Model	Iveco Daily 40C	Iveco Daily 70C
Wheelbase	4100 mm	4100 mm
GVW	4.2 t	7 t
Cargo load	approx. 1335 kg	approx. 3480 kg

Base flatbed		
Model	Iveco Daily 40C	Iveco Daily 72C
Wheelbase	3750 mm	4350 mm
GVW	4.2 t	7.2 t
Cargo load	approx. 1470 kg	approx. 3780 kg

Chassis cab base vehicle		
Model	Iveco Daily 40C	Iveco Daily 72C
Wheelbase	3750 mm	5100 mm
GVW	4.2 t	7.2 t
Chassis load capacity	approx. 1865 kg	approx. 4240 kg

Other possible models: based on Iveco Daily 35S, 35C, 45C, 50C, 60C, 65C.

¹ The actual range may vary based on numerous factors including driving style, route, weather and road conditions as well as vehicle condition, usage and equipment.

² Since the on-board charger is single-phase, a standard household charging box with a connected load of 11 kW can only be charged with 7 kW.



QUANTRON

QLI FCEV

QUANTRON WE ARE YOUR E-SOLUTION QUANTRON.NET

QUANTRON Q-Light – FCEV

Fuel-cell transporter 4.2 metric tons

Thanks to its wide range of superstructures the Q-Light FCEV can be used flexibly in different areas of application, e. g. in the logistics industry or as a delivery vehicle. Thanks to its quiet and emission-free drive, the transporter can also be used perfectly at the edges of the day and at night. The special feature of the QUANTRON design is that all drive components are stowed in the chassis, which means there are no restrictions on the superstructure. On board is a powerful fuel cell with 45 kW max. power. Thanks to the 8.2 kg of hydrogen, the QLI FCEV manages a long range of up to 500 km* - a true benchmark in the market.

Benefits

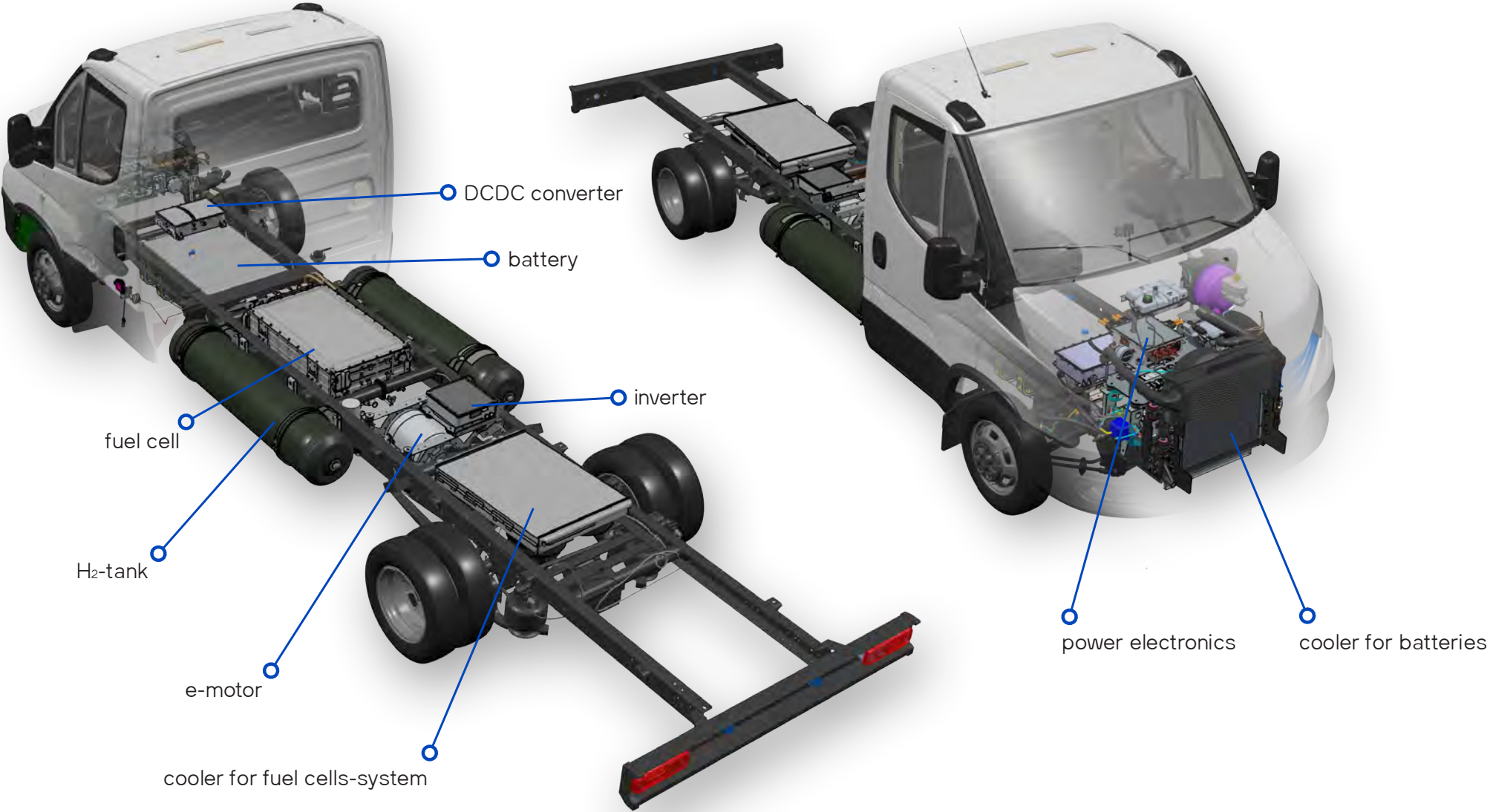
- New vehicles as well as retrofitting of existing and used vehicles possible
- Government subsidies of up to 80 % of the additional costs**
- Powerful fuel cell with up to 45 kW
- Short refueling times (similar to diesel)
- Emission-free transport for short, medium and long distances
- Use of lost heat from the fuel cell, e.g. to heat the interior (electricity savings for more range)
- High ranges through the use of a fuel cell
- High quality fuel cell system from our partner network
- Enhancing of own corporate image through sustainable transportation

*This is a preliminary simulated range.

**Government subsidies depending on the place of residence and the requirements of the applicant.



QUANTRON QLI - 100 % Hydrogen (FCEV)



Technical information

FCEV-170

Example configurations:

Performance

Power e-mode	150 kW (204 PS)
Torque e-mode	1250 Nm
Drive type	central motor
Top speed	80 km/h
Hydrogen altogether	8.2 kg
Range ¹	max. 500 km
Power fuel cell	45 kW

Battery specifications

Capacity	37 kWh
Voltage	400 V
Charging power	6.6 kW
Charging time	6 h
Battery charging cycles	2500

Base flatbed

Model	Iveco Daily 40C
Wheelbase	4100 mm
GVW	4.2 t
Cargo load	approx. 1080 kg

Basis chassis

Model	Iveco Daily 40C
Wheelbase	3750 mm
GVW	4.2 t
Chassis load capacity	approx. 1450 kg

¹This is a preliminary simulated range. The actual range may vary based on numerous factors including driving style, route, weather and road conditions as well as vehicle condition, usage and equipment



100% ELECTRIC
HOME DELIVERY



SCHRAACK
LITHIUM

Chassis & superstructures

Our two drive systems can be integrated into all chassis with different wheelbases and superstructures. You will therefore find tailor-made solutions for any transport requirements with the best driving dynamics and stability as well as ideal load distribution.



Van



Flatbed/Rear tipper



Dry freight case



Bus



Flatbed/Rear tipper
(long wheelbase)



Refrigerated case



MAERSK



Safmarine



MAERSK

HAMBURG SÜD

QUANTRON

国海运

OOCL

tex

tex

tex

tex

tex

tex

tex

A-RT 1012

QUANTRON QLI BEV & FCEV in detail



View of the engine compartment with fuel cell



Battery and power electronics (BEV)



Interior

Optional features:

- Air suspension
- LED headlights
- Luxury suspension seats
- Infotainment system (Alexa integration possible)

Due to a legal exemption, the additional weight of the alternative drive train can be increased to a maximum of 4.2t, which means that the vehicle can still be driven with the current class B car driving licence.

Our e-vehicles based on the Iveco Daily 40C (4.2 tons) fall precisely within this regulation. This compensates for the extra weight of the drive system.

Just contact us! The vehicle configuration for other special superstructures can be checked individually.



Our way to a better future

QUANTRON Infrastructure

Regardless whether it is a charging station or wallbox, a conventional charging unit or fast charger, we support you with the necessary infrastructure according to your requirements. For easy handling, modern payment systems are integrated into our Q-Charging models.

New, stock or used

We focus on your requirements: Quantron AG supplies zero-emission new vehicles, electrifies your existing vehicles or converts used vehicles to environmentally-friendly electric drive versions for you.

Think Green –

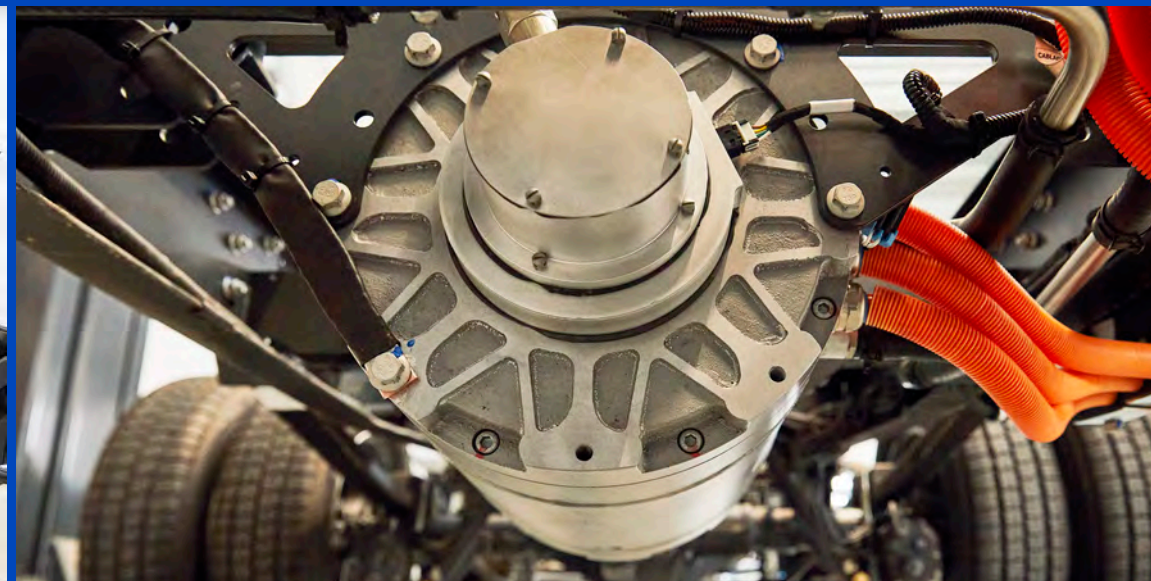
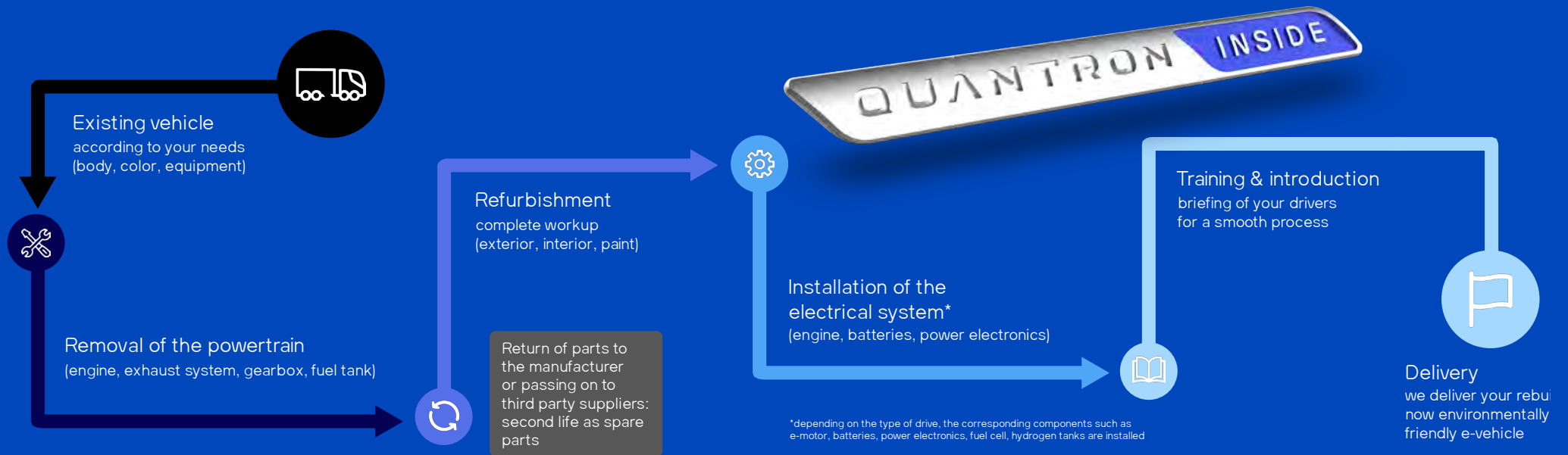
Second Life Vehicle

We give used commercial vehicles and buses a second, environmentally-friendly life - great potential for climate protection and resource management.

Second Life Battery

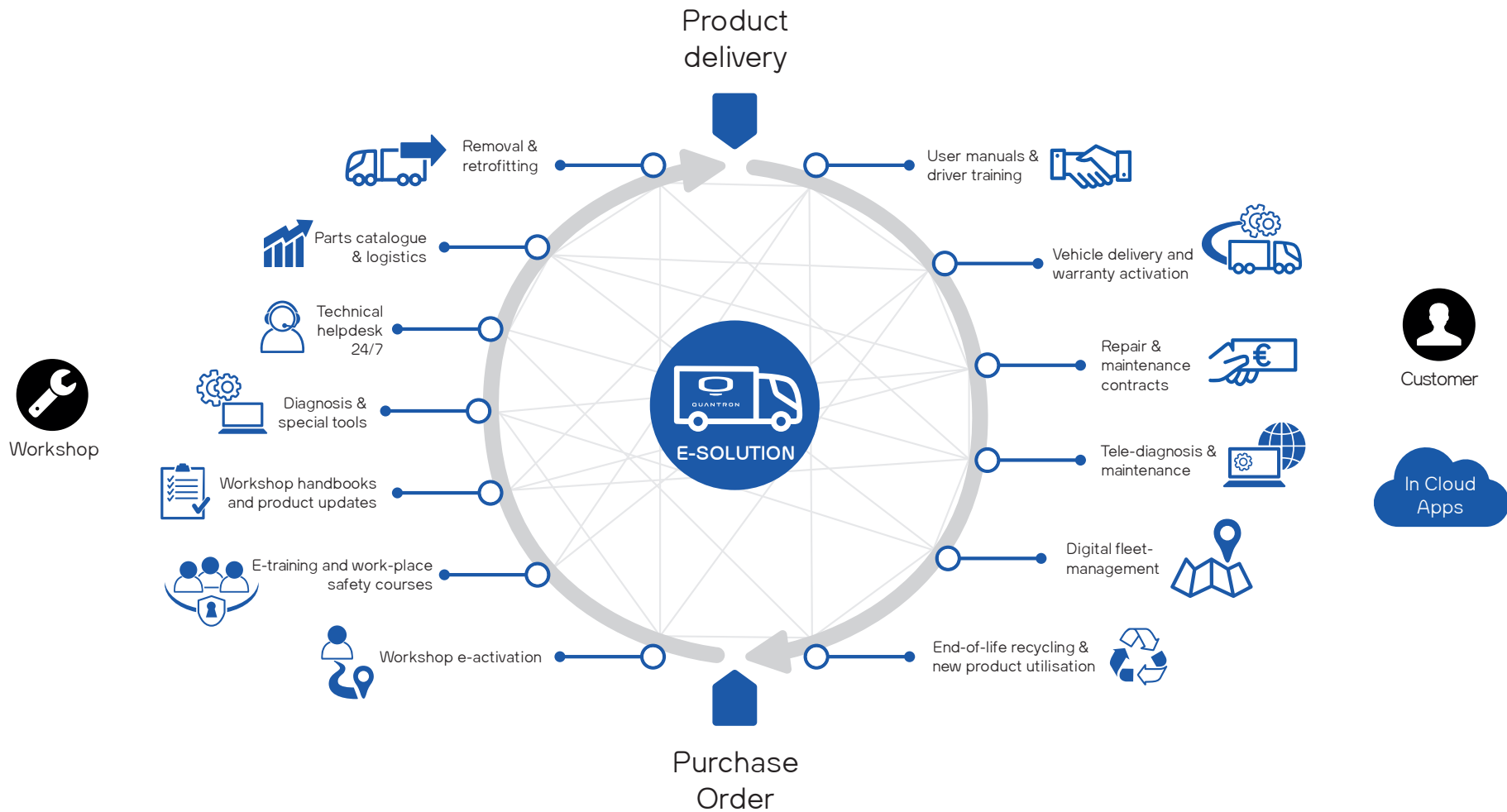
After 6-8 years, the used batteries enter their second life in the stationary area (e.g. in connection with photovoltaics as energy storage devices, for charging e-vehicles and absorbing peak currents).

The QUANTRON sustainability concept – Q-Retrofit



The QUANTRON CUSTOMER SOLUTIONS

Aftersales service circle



Combining product, organizational, digital and commercial know-how, QUANTRON-Aftersales offers a full package of e-mobility services to both, workshops and customers.



QUANTRON

QUANTRON  Leben & Arbeiten

Finanzierung
Vermietung
www.ham...

Wir sind
Leben...

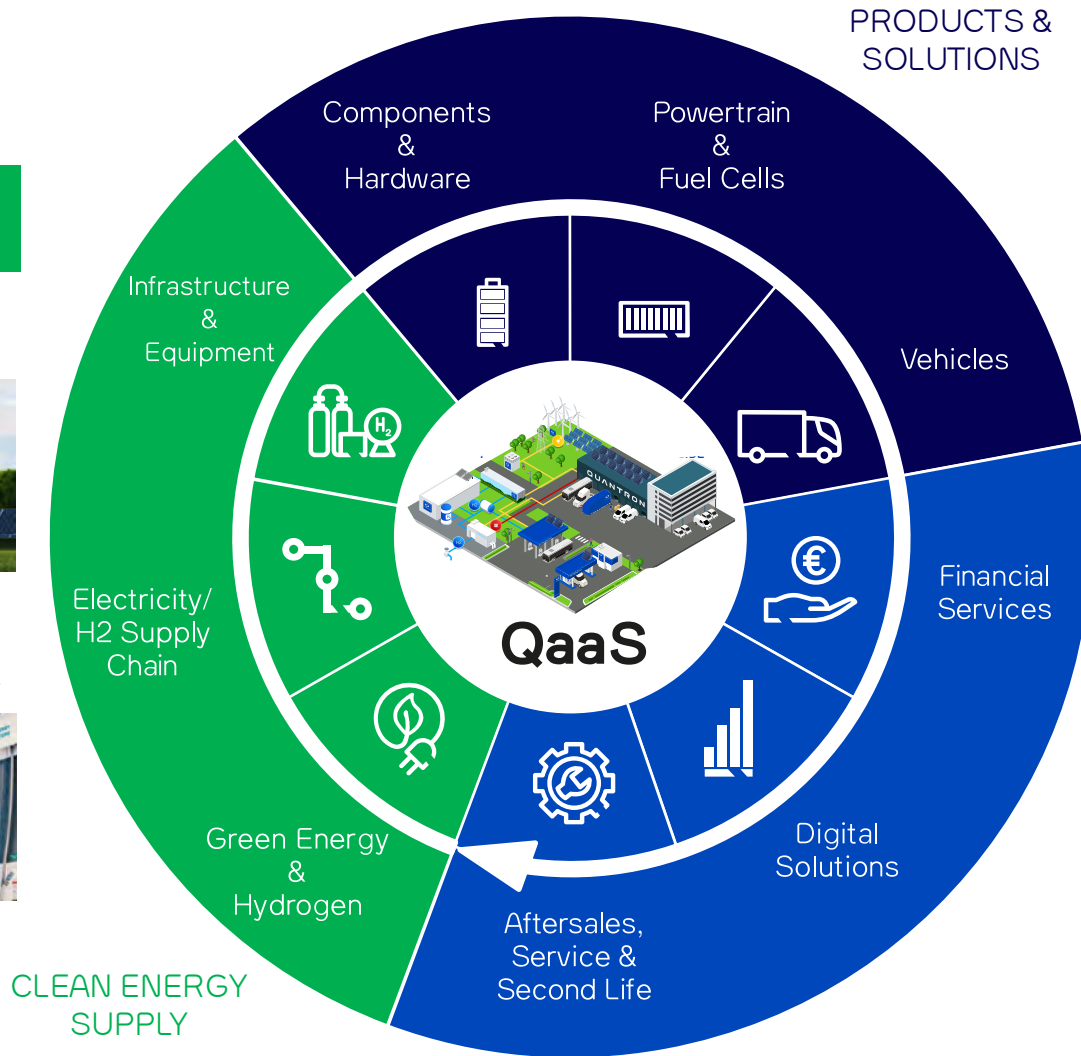
QUANTRON 360° Platform – Quantron-as-a-Service Zero Emission Solutions

QUANTRON ENERGY & POWER STATION

Production and distribution of green energy and hydrogen



H₂ refilling & electricity charging infrastructure network and equipment



QUANTRON INSIDE

Fuel cell and battery electric commercial vehicles and components

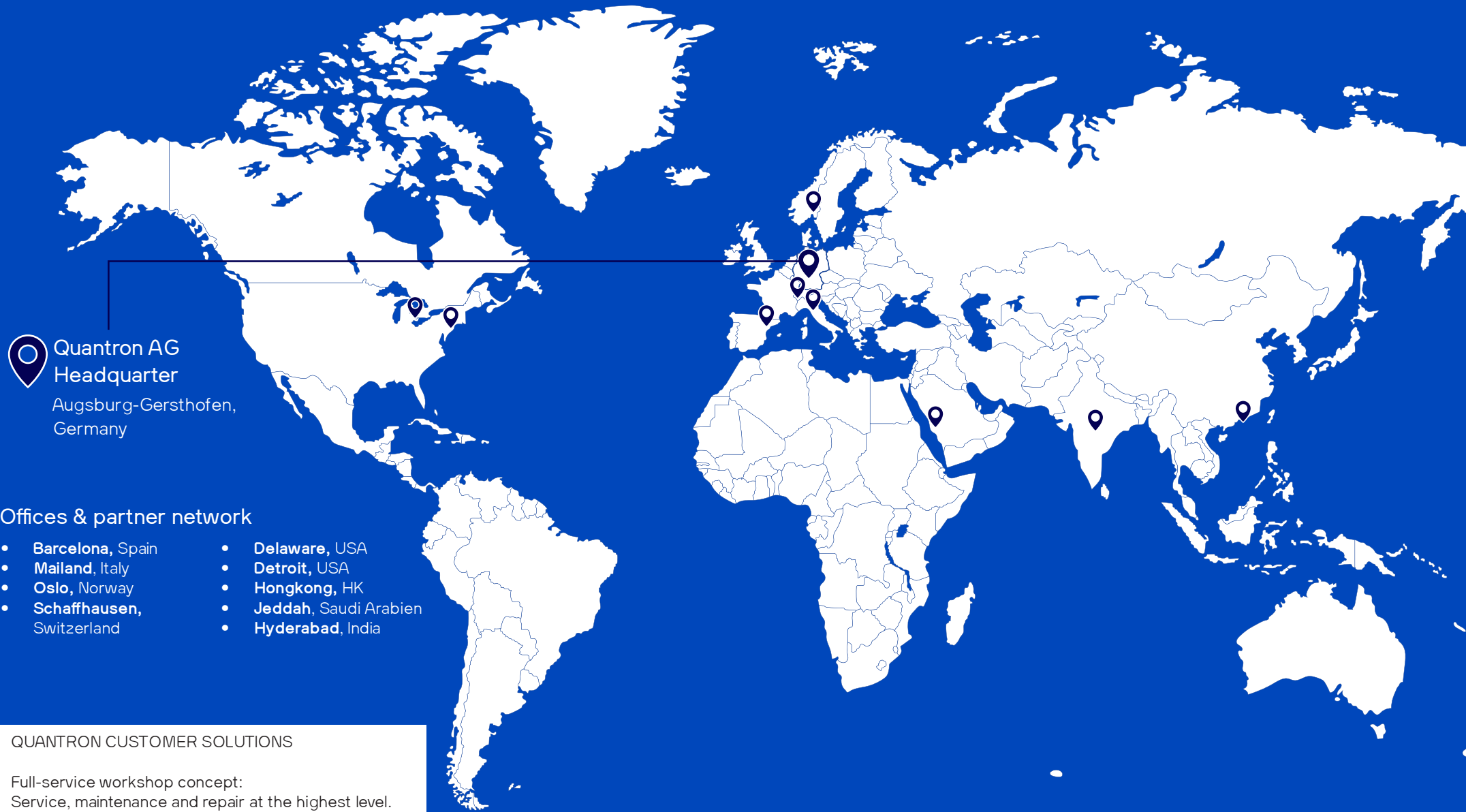



QUANTRON CUSTOMER SOLUTIONS

Physical and digital solutions for sales aftersales, financing and 2nd life



Global availability with a strong network of QUANTRON offices and 700 service partners



 **Quantron AG
Headquarter**
Augsburg-Gersthofen,
Germany

Offices & partner network

- **Barcelona**, Spain
- **Mailand**, Italy
- **Oslo**, Norway
- **Schaffhausen**, Switzerland
- **Delaware**, USA
- **Detroit**, USA
- **Hongkong**, HK
- **Jeddah**, Saudi Arabien
- **Hyderabad**, India

QUANTRON CUSTOMER SOLUTIONS

Full-service workshop concept:
Service, maintenance and repair at the highest level.
No matter if transporter, bus or truck. For all manufacturers.



Quantron AG
Koblenzer Straße 2
D-86368 Gersthofen/Augsburg
Phone: +49 (0) 821 78 98 40 - 0
Fax: +49 (0) 821 78 98 40 - 99
Mail: info@quantron.net
www.quantron.net

Status: 02/2023 | EN
QUANTRON reserves the right to change the technical characteristics
and specifications of its products without prior notice.